

APPLICATIONS

Used for Full range Disco, P.A. Monitor and musical instrument applications.

LOUDSPEAKERS

Bass: Classic 15 C models
Specialist Bass 100
Studio 15 B, L & G
Colossus 15E

Middle: Smooth Middle Classic 10/100C
Bright Middle Studio 10M

HORNS

HF250 or ST5020 Bullets.
Crossovers: HP X5 for 500 Hz; Horns as required.

PERFORMANCE

Well balanced system of the Monitor Type. From between 35 Hz-55 Hz up to 15-20 kHz and sensitivity 98dB to 102dB for 1 Watt, 1 Metre depending on the models selected.

CONSTRUCTION

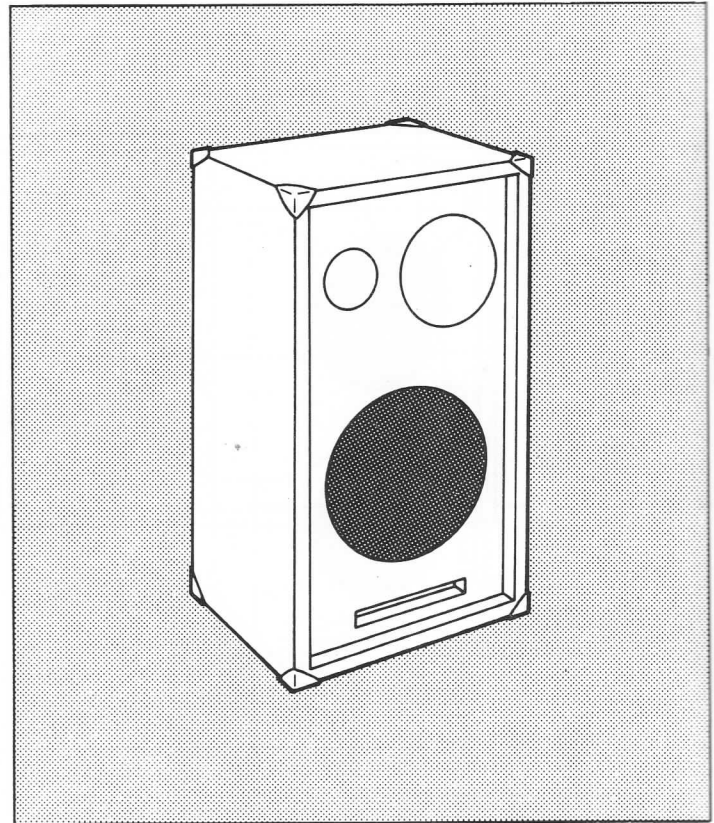
Fairly straightforward - ensure Mid-range compartment is sealed.

MATERIALS

1 sheet of 18mm ($\frac{3}{4}$ " Board 8' x 4' size (2438 x 1219).

VOLUME

Total — 8800 cubic inches.
Reflex — 6650 cubic inches, 106 Litres



SPECIAL NOTES

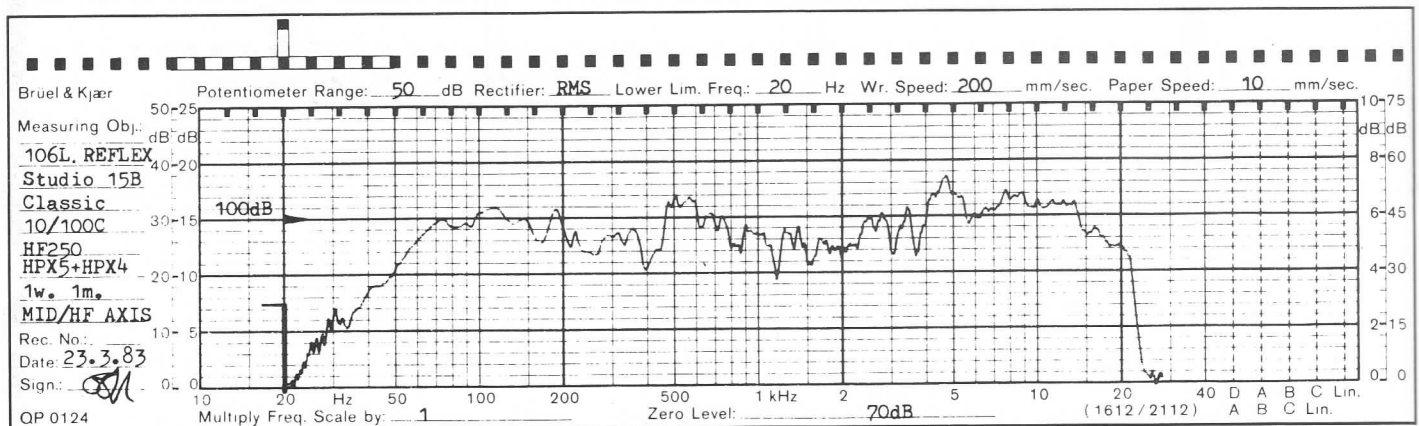
PORT SIZE

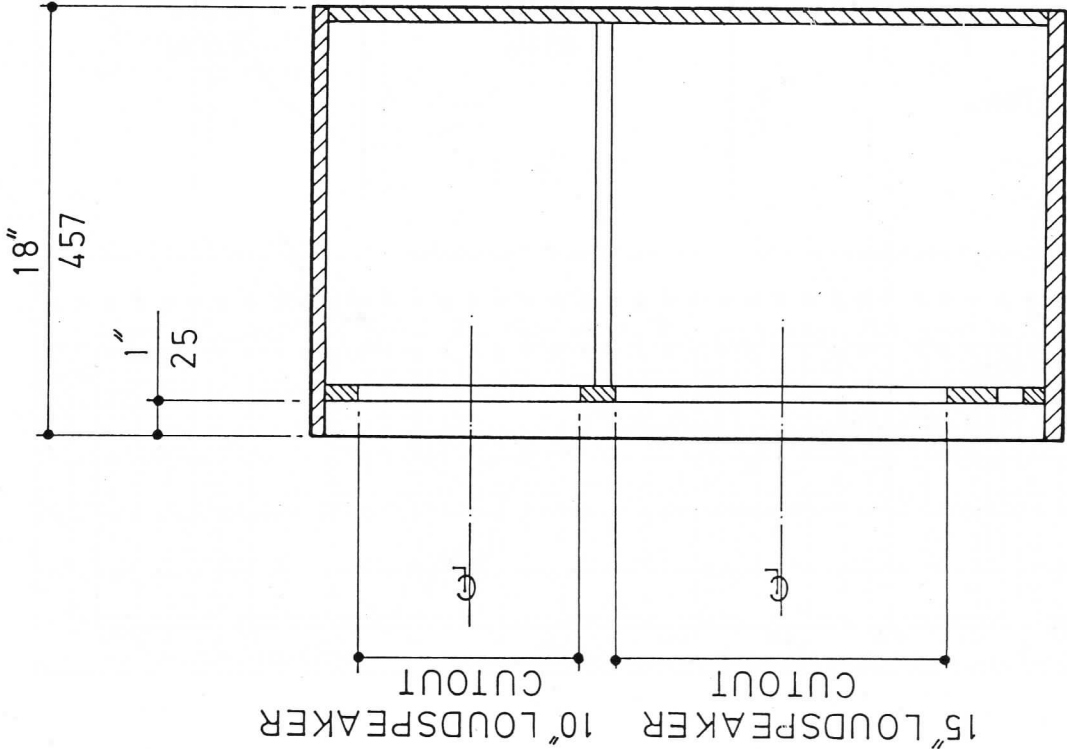
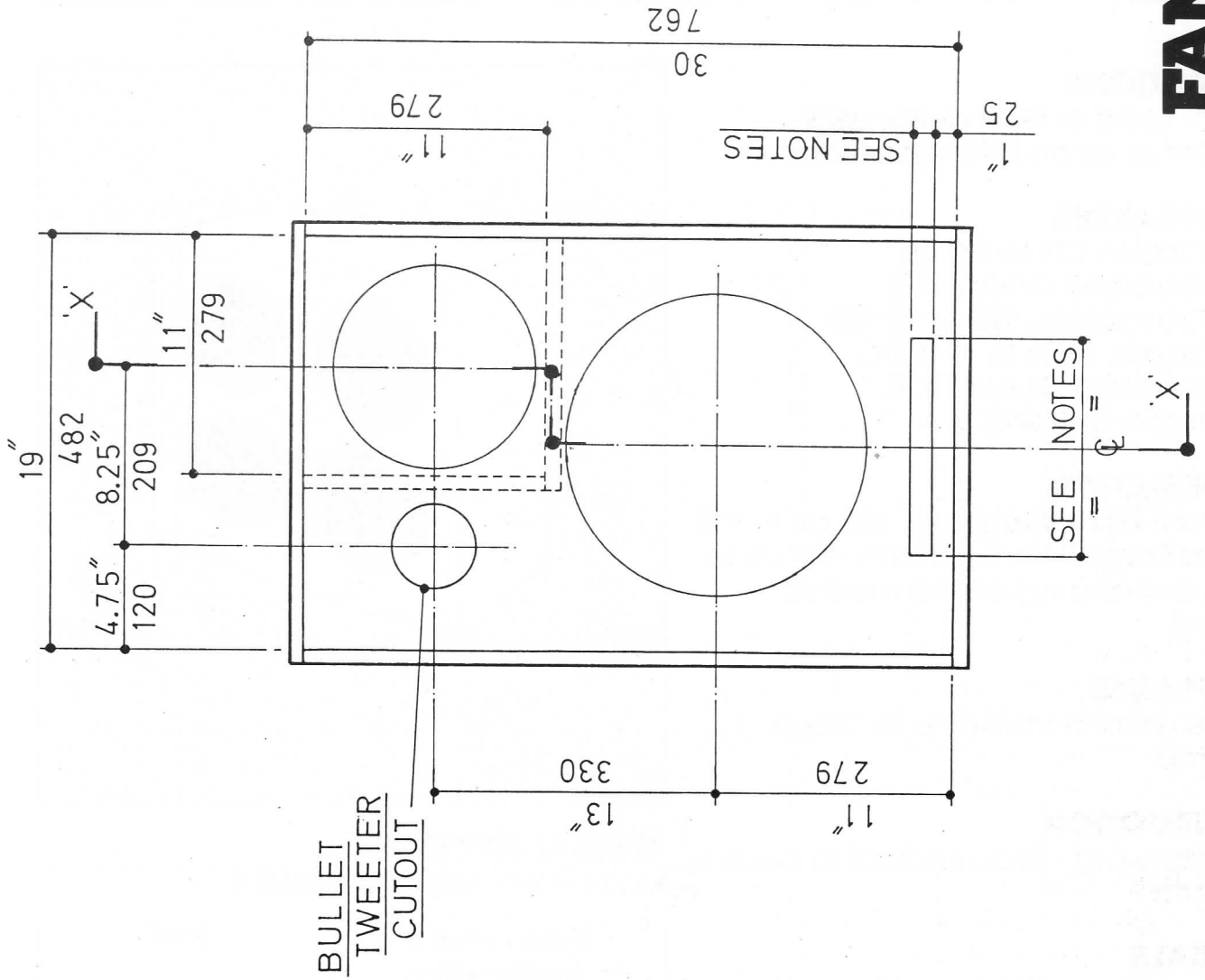
Resonance of Loudspeaker

40 Hz
45 Hz
55 Hz
60 Hz

Area

10 square inches
12 square inches
24 square inches
33 square inches





4 x 12 GUITAR CABINET

LEAD AND BASS

APPLICATIONS

Used for Lead or Bass guitar with Amplifier or as an Extension Cabinet.

LOUDSPEAKERS

Lead: Classic 12's to 12/100
Specialist Guitar 100L
Crescendo: 12E or 12/100.
Bass: Classic 12C's to 12/100C
Specialist Guitar 100B.
Studio 12 B or G.

PERFORMANCE

Lead from 80 Hz. Sensitivity 103 dB to 110 dB. Bass from 40 Hz. Sensitivity 102 dB to 108 dB depending on the models selected.

MULTIPLE USE

Can be used in multiples for Stage Back Line.

CONSTRUCTION

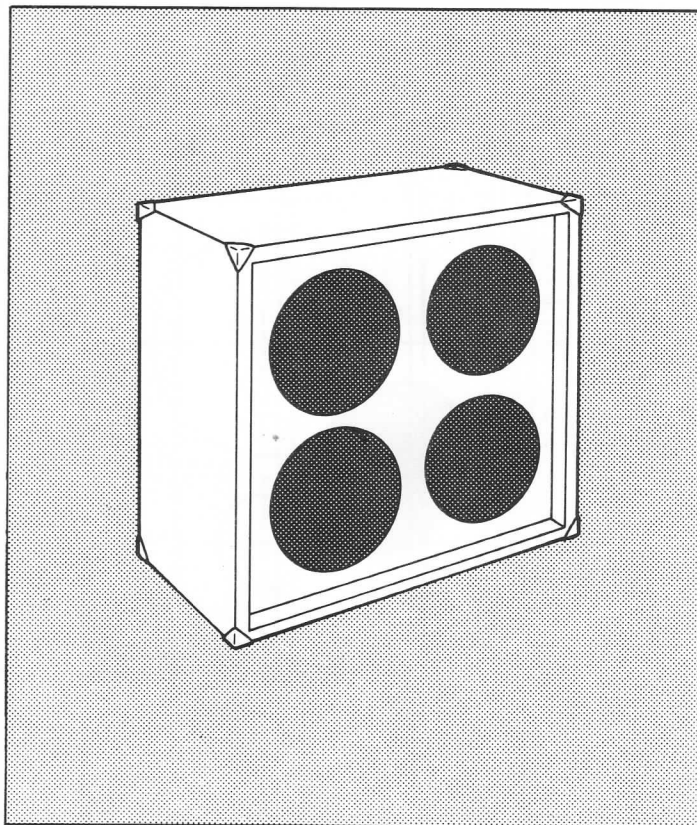
Straightforward - Bracing front to back is important.

MATERIALS

1 sheet of 18mm ($\frac{3}{4}$ ") Board 8' x 4' size (2438 x 1219).

VOLUME

7000 cubic inches. 112 Litres



SPECIAL NOTES

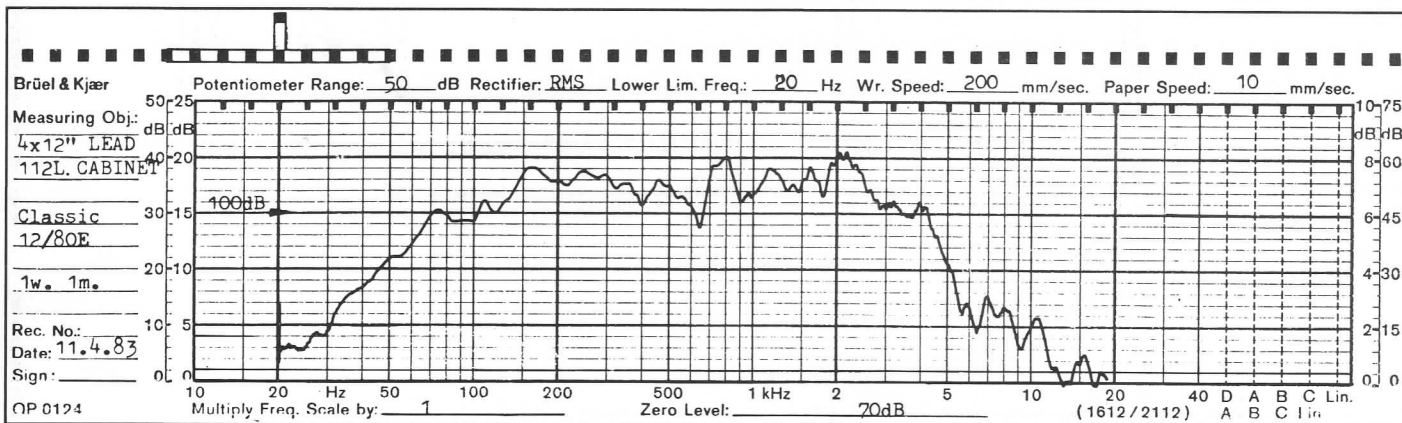
Made to Reflexed for Bass Guitar.

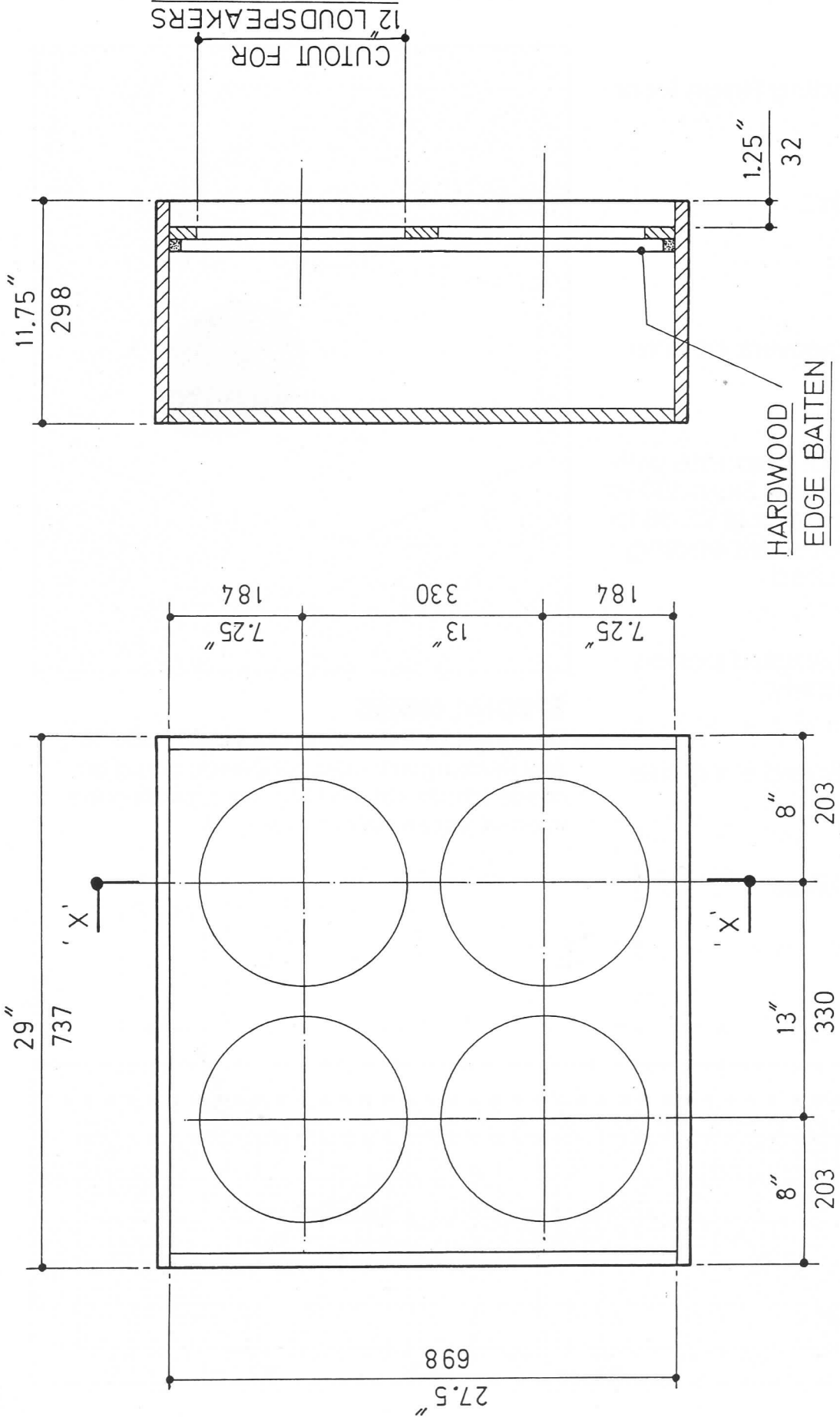
Resonance of Loudspeaker

45 Hz
55 Hz
65 Hz

Port

1 of 4"
2 of 4"
2 of 4 $\frac{3}{4}$ "





SECTION 'X-X'

APPLICATIONS

An angled Floor Standing Stage Front Foldback Monitor.

LOUDSPEAKERS

Classic 12 C to 12/150 C.
Crescendo: 12/80.
Studio 12 B, L or G.

HORNS

J, series or Bullets. Crossovers: as Horn requirements.

PERFORMANCE

Smooth Middle and H.F. response with very limited Bass response. From 100 Hz to 15 to 20 kHz at sensitivities of 98 dB to 102 dB for 1 Watt, 1 Metre depending on the loudspeakers used.

CONSTRUCTION

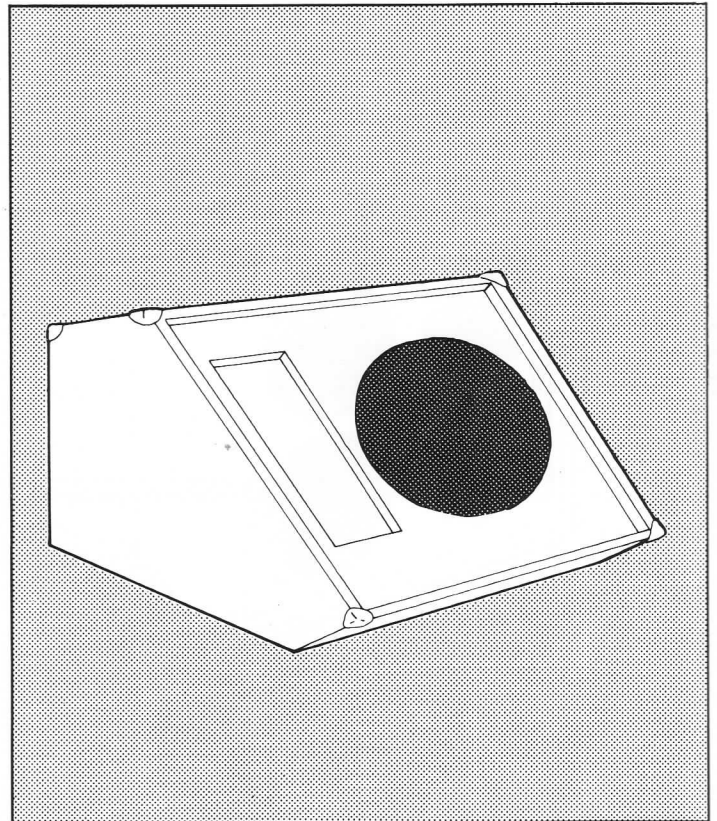
Fairly straightforward Angled panels need mitreing accurately.

MATERIALS

$\frac{1}{3}$ sheet of 18mm ($\frac{3}{4}$ ") Board 8' x 4' size (2438 x 1219).

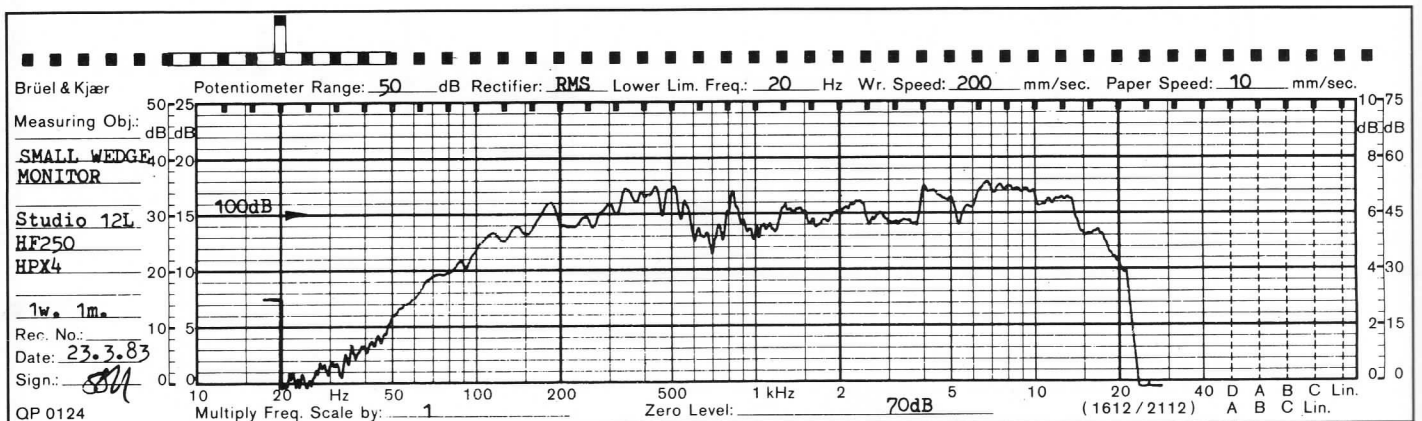
VOLUME

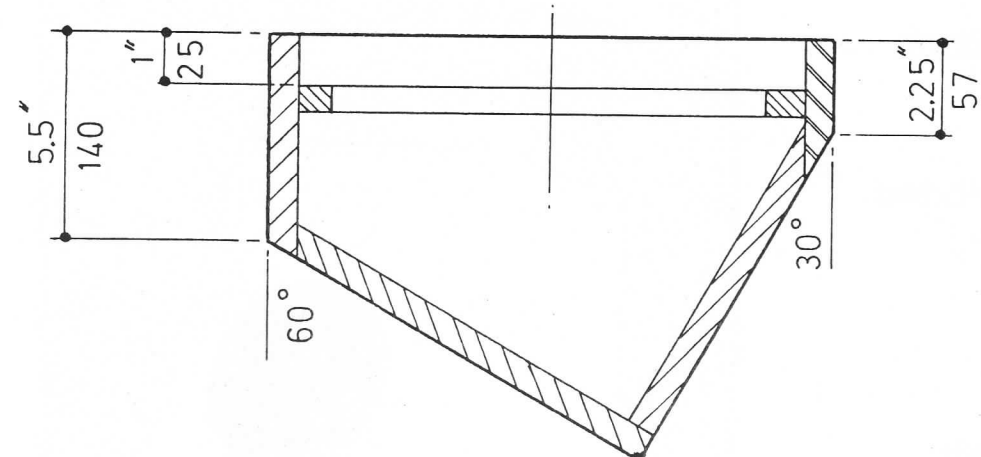
880 cubic inches. 15 Litres



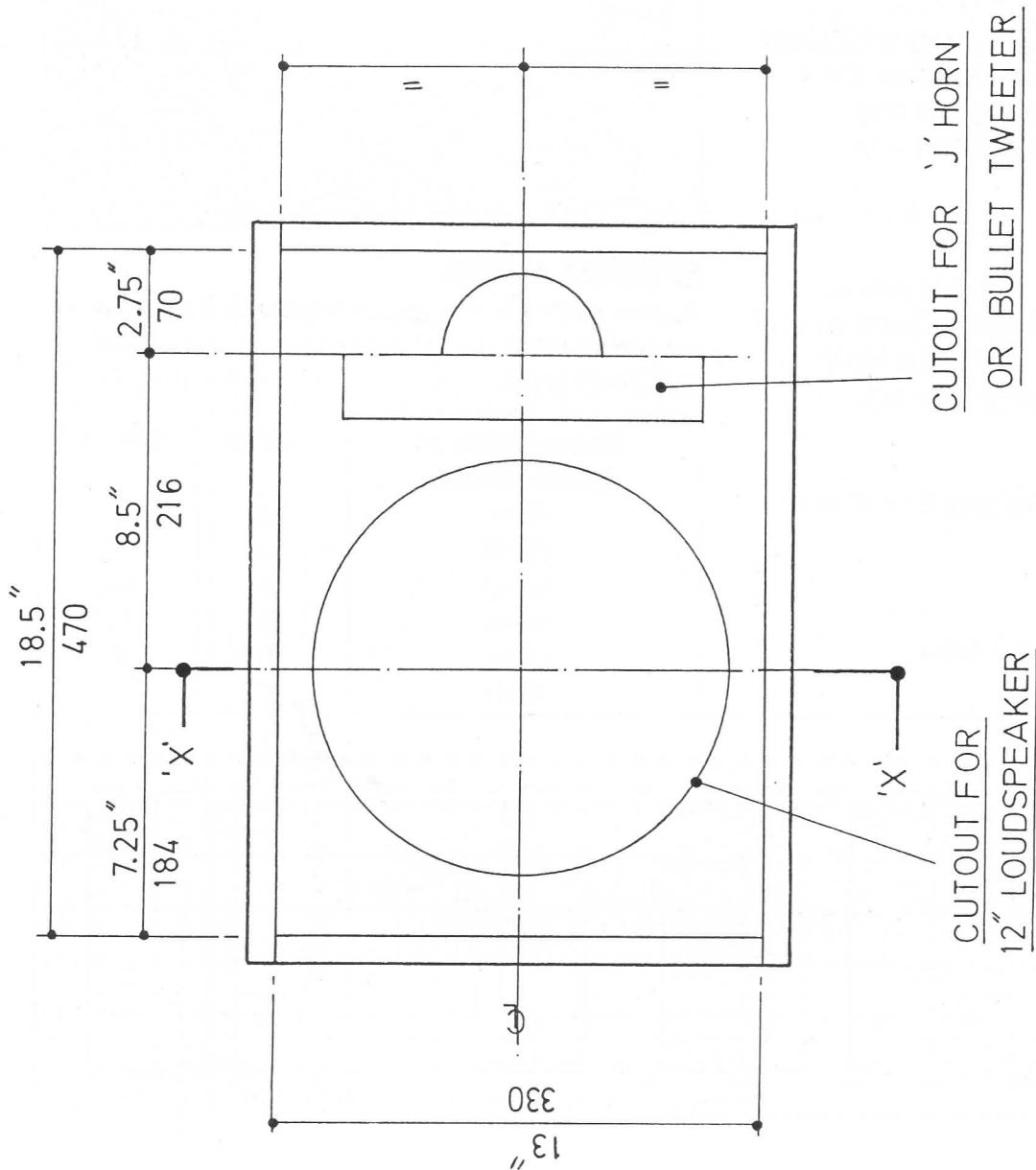
SPECIAL NOTES

Designed for 2 standing angles 60° and 30°. Any Rectangular Cabinet Design could be made into an angled Monitor providing the internal Volume is not changed.





SECTION 'X-X'



APPLICATIONS

An angled Floor Standing Stage Monitor cabinet.

LOUDSPEAKERS

Classic 15 standard or 'C' Models
Specialist Bass 100.
Crescendo 15E or 15/200E.
Studio 15 B, L or G.
Colossus 15E.

HORNS

J105 or HF250 or ST5020 Bullets.
Crossovers to suit Horn requirements.

PERFORMANCE

From between 35 Hz-60 Hz up to 20 kHz with 99 dB to 104 dB sensitivities for 1 Watt, 1 Metre. Depending on the models selected. Good Bass with smooth Mid-range.

CONSTRUCTION

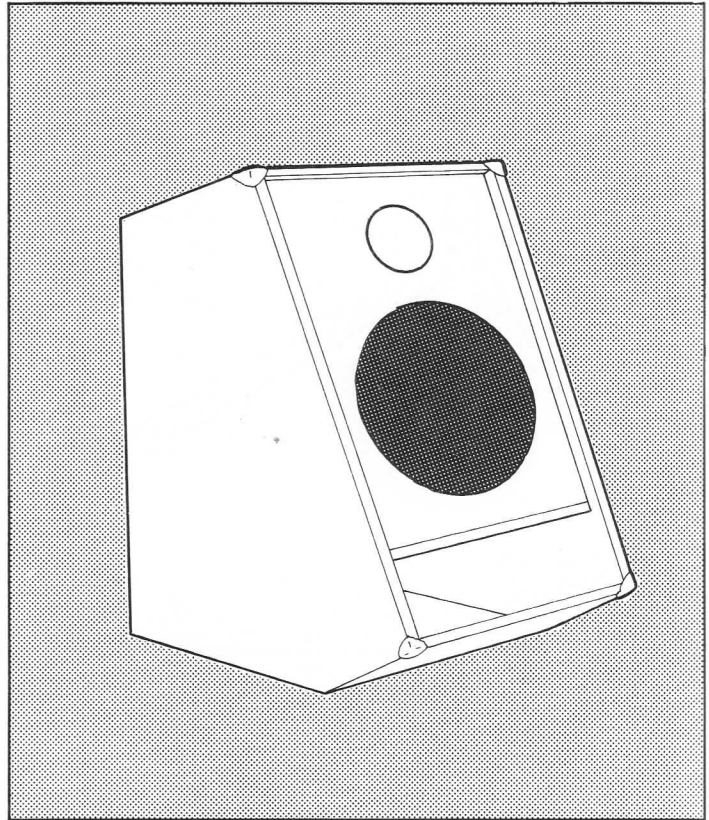
Fairly straightforward. Panels need mitreing accurately. Select Duct to suit loudspeaker. Position and cut Horn opening to suit model selected.

MATERIALS

1 sheet of 18mm ($\frac{3}{4}$ "') Board 8' x 4' size (2438 x 1219).

VOLUME

6670 cubic inches. 106 Litres.



SPECIAL NOTES

A Lens may be added to the Horn if required for Full short-throw dispersion.

DUCTING SIZES

Resonance of Loudspeaker	Dim. 'A'	Dim. 'B'
40 Hz	3 $\frac{1}{4}$ "	1"
50 Hz	0	$\frac{5}{8}$ "
55 Hz	0	1 $\frac{3}{16}$ "
60 Hz	0	1 $\frac{5}{8}$ "
65 Hz	0	2"
70 Hz	0	2 $\frac{1}{2}$ "

